

8x8 digital audio matrix

MIM088

MIM088
MPAGE16



MIM088 is an 8 in / 8 out digital audio matrix, fully programmable and linkable to a second unit to become a 16x16 matrix, with real routing from any input to any output. It can be configured and managed via Ethernet with the included EclerNet Manager software, also offering many other external control options: Windows® based networked clients (a graphical, custom-made screen for each user), TP-NET third-party control protocol for the integration with external control hardware like Crestron®, AMX®, Extron®, etc., digital WPTOUCH wall panels, digital MPAGE16 paging station, 8 GPIO ports, etc.

Key features

- 8 MIC/LINE balanced inputs, with phantom power selection and mono or stereo management
- 8 balanced outputs with mono or stereo management
- 2 additional monitoring outputs
- Expandable to 16 inputs / 16 outputs to become a real 16 x 16 matrix (using the digital audio bus between MIM088 units, a CAT5 connection which can handle 100 meter distances)
- 8 GPI ports (General Purpose Inputs): 0-10 VDC control inputs assignable to MIMO functions, like volume control, MUTE, preset recall, etc.
- 8GPO ports (General Purpose Outputs): relay contacts to remote control external devices, like motors, lights, etc.
- Digital control bus for the WPTOUCH (digital touch-sensitive) wall panel and the MPAGE16 (digital & touch sensitive paging station)
- Fully programmable and controllable via EclerNet software (with a straight PC-MIM088 cable connection or by means of an Ethernet network)
- Ethernet remote control with multi-client simultaneous connections: Windows® based control screens customised for the needs of each user
- A few processing bits: signal generator, delays, full parametric EQ filters at inputs and outputs, inputs noise gate, level, mute, phase, vu-meters, outputs compressor / limiter, ducking (priority & overriding), virtual and physical paging stations management, automatic mixer function, presets save & recovery, scheduled events triggering

Recommended amplification

- MPA multichannel series
- HZA multichannel 100V line series
- NZA multichannel networkable series
- NPA stereo networkable series

Accessories

- **WPTOUCH** touch-sensitive digital wall panel control
- **MPAGE16** touch-sensitive digital paging station
- **WP-series** wall panel controls

Applications

- Centralized, distributed or hybrid fixed installation
- BGM & Paging solutions, with message priorities and source/volume independent selection
- Integration in installation global control systems
- Conferencing (automatic mixing)
- P.A. management (multi-way speaker processing, delay adjustment, etc.)
- Installations requiring remote supervision, diagnostic and adjustment via Internet
- Live sound (WiFi management is possible from a PC)



MPAGE16

MPAGE16 is a digital paging station for the MIM088. It features 21 touch-sensitive keys that, together with the MIM088 hardware, allow for an easy, flexible and user-friendly configuration of a paging system that can coexist with other MIM088 functions and with other control hardware and/or software control systems.

Key features

- 16 zone selection keys
- SELECT ALL, CLEAR and PAGE keys
- Two user-defined functions keys (for recalling presets, for example)
- Gooseneck integrated microphone
- Several MPAGE16 or software (virtual) paging stations can work simultaneously (priorities and zones availability is managed by the MIM088 software setup)

WPTOUCH

MIM088 digital touch-panel. Allows for source or preset selection and volume control for the selected output zone

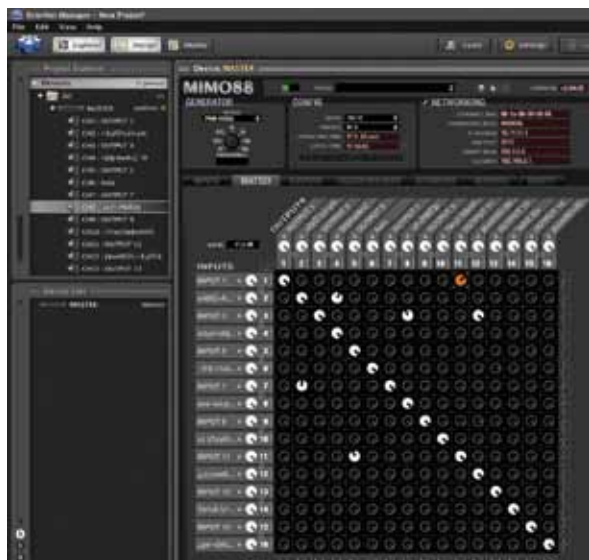
MIM088

MIM088
MPAGE16

8x8 digital audio matrix



Product



MPAGE16



WPTOUCH

