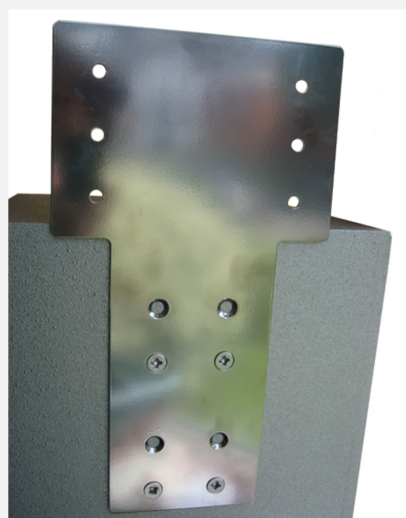


The FP8 plate has been designed to mount the Forte 8.0.2 loudspeaker directly to a wall. It will allow the loudspeaker to be fixed as close to the surface of the wall as possible making for a low profile installation. The plate comes with four shake proof washers which should be used. It also should be used with suitable M8 wall fixings capable of supporting a minimum load of 30kgs.

Available in black or white finish

FP8B : Black

FP8W : White



The bracket may be fitted in two different positions depending on the required installation height of the loudspeaker

