

Sennheiser tour-guide systems.  
Created to  
inspire people.



Tour-guide systems

 **SENNHEISER**



## Your success speaks for itself.

Numerous products, machines and situations are first brought to life and correctly understood with clear words and the right sound. Whether it is a guided tour, trade fair or conference – the communication of information always plays a key role.

Every event is different and has its own specific needs. For precisely this reason the audio transmission system must be perfectly suited to the event. The demands made on the sound quality for a factory tour, for example, differ from those for a product training session, press conference or trade fair event. If everything is optimally tuned, your event is sure to be a resounding success.

You wish to organise several guided tours simultaneously – without the tour-guide systems interfering with each other?

Your visitors must be able to easily understand every word, even in loud surroundings?

You need excellent sound and absolutely clear speech intelligibility throughout the event, as even the least disturbance or difficulty in understanding is unthinkable?

You are planning regular guided tours which should be entertaining and inspiring, even without a tour guide?

You want additional interpreters to accompany the tour – and be able to join in the conversation?

### We have the answer.

Whichever requirements you have for your event – Sennheiser has the optimum solution: high-quality, versatile tour-guide systems.

### Sennheiser: quality you can hear.

Sennheiser has been at home in the world of sound for more than 60 years. With this know-how and experience we develop first-class, reliable audio solutions for a wide range of uses.

# Wide range of possibilities. Enthusiastic visitors.

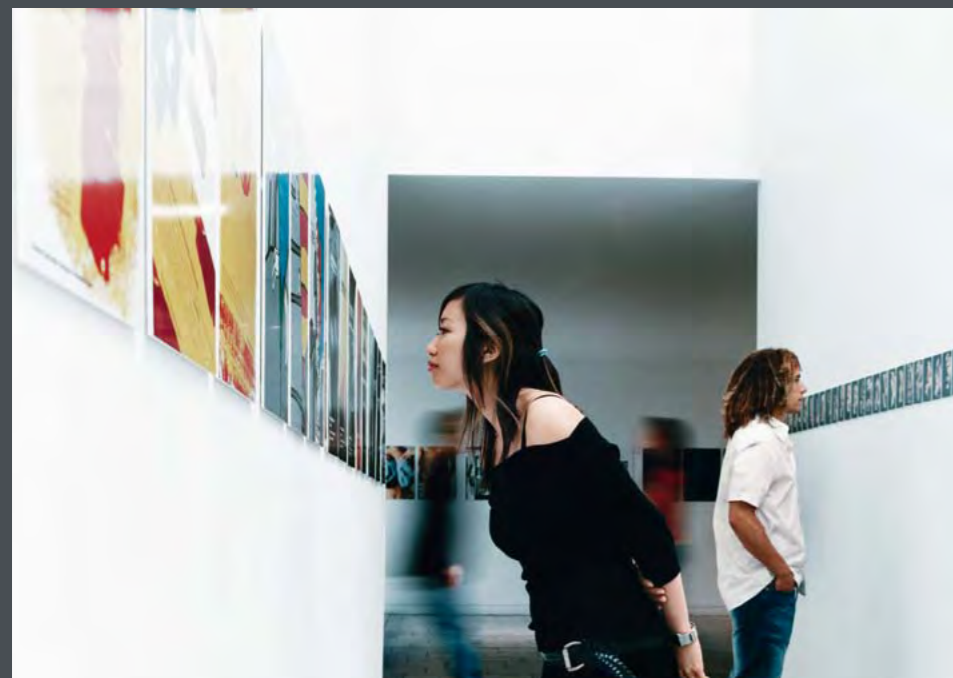
Here are only a few examples of the numerous possible uses of the Sennheiser tour-guide systems.



**Factory tour.** You wish to take several visitor groups through your production facility simultaneously? The machines work fast – and produce not only unique products, but also intensive background noise. The tour guide should be able to talk calmly at a normal level – and visitors should be able to understand every single word during the entire tour. A powerful system with excellent speech intelligibility is called for here. Sennheiser’s tourguide EK 1039, for example.



**Trade fair.** At your trade fair stand three groups are listening to different lectures simultaneously. Some people need an additional hearing aid. Every participant should hear all that is being said – and the tour-guide systems of the different groups should not interfere with each other. An easy-to-use digital system is called for here. Sennheiser’s tourguide 2020-D, for example.



**Exhibition.** You want to make your museum individually accessible to as many visitors as possible? Flexibly and nevertheless with a structured, exciting and explanatory audio accompaniment. Tour guides do not fit into your concept. An intelligent, automated system is called for here. Sennheiser’s guidePORT, for example.

**Press conference.** You wish to present your company at its best. Numerous journalists have been invited. You simply cannot afford equipment failure. Transmission problems or unintelligible phrases not only give a bad impression, they prevent participants from gaining the whole picture. A system with outstanding sound quality is called for here. Sennheiser’s tourguide EK 1039, for example.



**Connect. Communicate.  
Amplify. Understand.**

Whether it is a quiet or noisy environment, a small or large group, several different groups or just one, with or without an interpreter, with or without a tour guide, audio in combination with visual applications ... Sennheiser is the right partner for reliable transmission of information.

For customized solutions and individual consultation please contact your Sennheiser representative.



**Discover our versatile  
visitor guidance/information systems:**



tourguide 2020-D



tourguide EK 1039



guidePORT

# tourguide 2020-D: versatile, comfortable audio transmission.

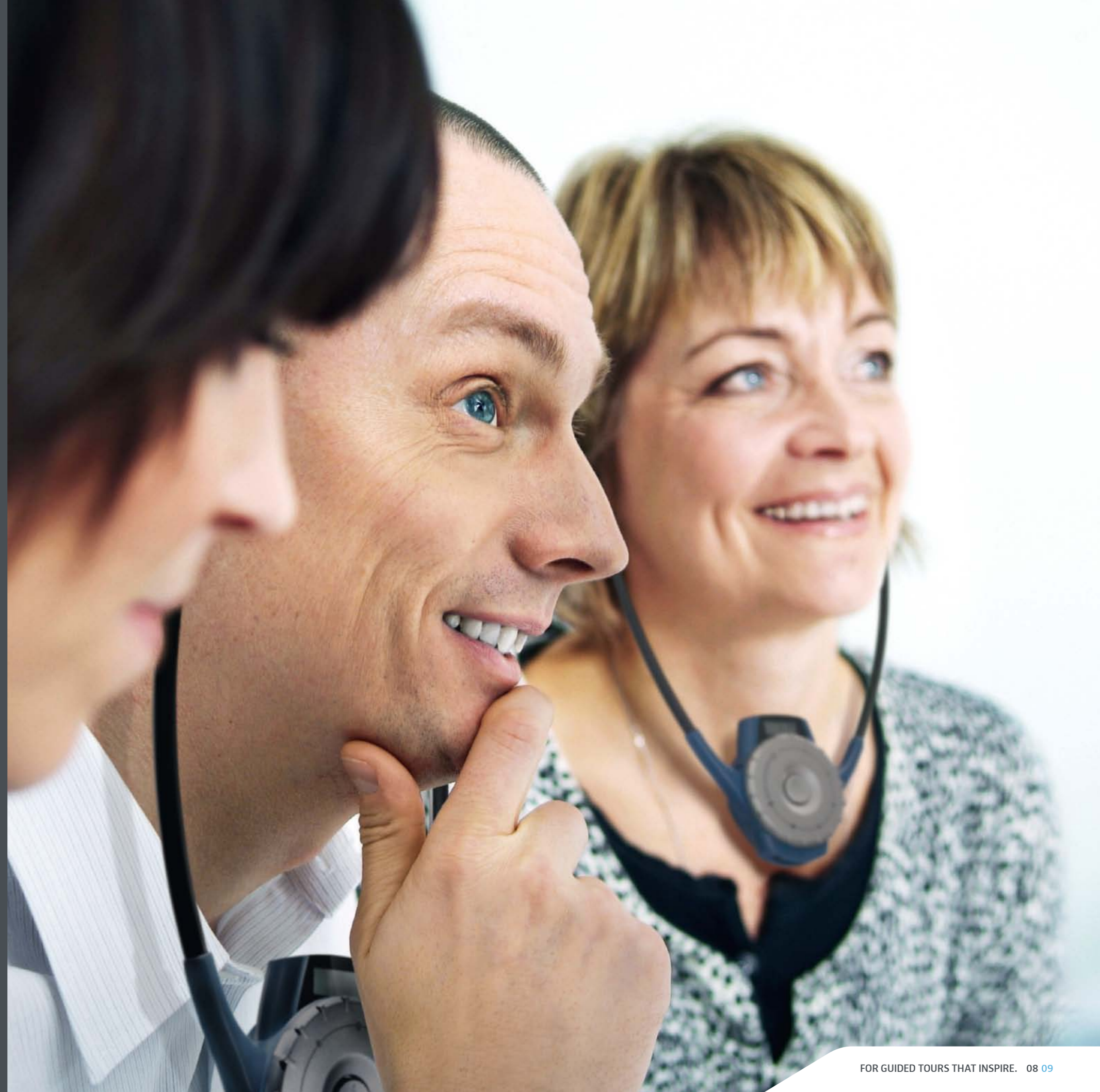
Whether it's a company tour or international conference – the Sennheiser tourguide 2020-D is the perfect companion for wireless sound transmission. For guided tours the system enables an undisturbed listening experience for up to six different groups simultaneously.

You can choose between different transmitters and receivers. The practical and lightweight stethoset receiver, for example, combines a receiver and headset in one unit. That greatly facilitates the distribution of devices – and your listeners don't need to wear more equipment that absolutely necessary. The pocket receiver can be fitted with individually selectable headsets – and permits the use of an induction loop for optimum support of the hearing-impaired during the tour.

Multilingual success: in stationary operation with the SR 2020-D rack transmitter your international conferences can also be interpreted in up to eight languages simultaneously.

## Your benefits at a glance:

- Ready to go
- Intuitive operating concept
- Extremely robust
- For up to six visitor groups simultaneously – without interference
- Can be used for simultaneous interpretation in up to eight languages (stationary with the SR 2020-D rack transmitter)
- Hearing aid compatible – for optimum barrier freedom
- Practical charging technology



# tourguide 2020-D product overview.



## HDE 2020-D-II

The HDE 2020-D stethoset digital tourguide receiver is comfortable to wear. This truly unique device integrates both the receiver and headphones and delivers a number of advantages for you. No longer will your audience have to carry more equipment than is absolutely necessary. Being a one-piece device, there is no longer a risk of entangled wires. The powerful battery ensures that the device will work for up to eight hours. Regardless of whether you are providing your tour in a big city or a large corporation, tourguide 2020-D will ensure that your tour proceeds without interruption. The stethoset receiver automatically deactivates itself the moment it is taken off, meaning battery life will be preserved. The tourguide no longer needs to check all the sets after one tour finishes and the next tour is due to start. Your tour participants will be able to individually adjust the volume through a rotary control on the receiver, without the need to even take the device off. An LC display clearly confirms the volume, battery status, quality of reception and the channel being listened to. Channels can easily be set and adjusted by using the middle buttons. The reception range is about 100 m if your tour is outdoors and about 50 m if it is indoors.

## EK 2020-D-II

Round off your Sennheiser tourguide system with the EK 2020-D receiver. Whether conferences, guided tours or hearing assistance: this extremely sturdy and versatile bodypack receiver provides excellent audio and ease of use for your guests. The EK 2020-D can be used with headphones or an induction neckloop for transmitting the sound to hearing aids equipped with a T coil. Digital transmission ensures optimum reception quality, with a range of up to 100 metres outdoors and around 50 metres indoors. The backlit receiver display shows all settings at a glance. Of course, the bodypack receiver can be used in mixed systems with stethoset receivers. EK 2020-D: just right for everyone. All your guests need to do is connect their headphones or induction neckloop to the receiver. That's it! The receiver can conveniently be clipped to the shirt pocket or worn on a lanyard. When no signal is received, or when the headphones or neckloop are disconnected, the receiver will automatically switch off to save battery life. The operating time is up to 16 hours.

## SKM 2020-D

Speaking into the hand-held microphone SKM 2020-D is the easiest way to address your audience. Should a tour participant pose a question, just hand over the microphone and everything will get clearly through to everybody. Interviewing an expert in front of your audience will make your tour even more interesting. The SKM 2020-D efficiently attenuates unwanted background noise. The transmitter is easy and comfortable to operate and highly robust. Check the back-lit display for channel and battery status. The rechargeable battery lasts for a tour of eight hours straight. After the tour, simply quick-charge the battery pack in the charging case EZL 2020-20L which has an extra slot to charge and store a spare pack.

## SK 2020-D

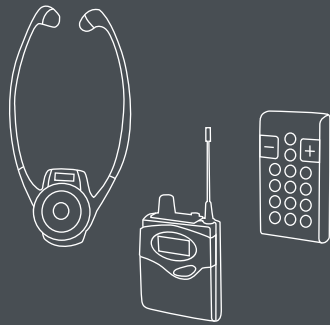
The tourguide transmitter SK 2020-D will allow you to deliver a highly professional guided tour. Combining the bodypack transmitter with an headworn or clip-on microphone gives total freedom of movement during your tour. You have both hands free to describe an object, make a presentation and express your point. The transmitter can be easily and comfortably operated, and is highly robust. The back-lit display confirms channel choice, the radio signal and the status of the battery. Two jacks for the microphone and line ensure variable utilization. For example, you will be able to transmit an external audio source such as music from a portable CD player via your transmitter and continue to talk or mute the microphone.



## EZL 2020-20L

The EZL 2020-20L charger case has been designed to be highly user-friendly. It acts as both the storage case for all equipment and charging station for the tourguide receivers and transmitter. Twenty charging bays for the receivers and two charging bays for the transmitter – or its rechargeable battery pack – are provided. A truly impressive feature of the charging case is the copy button. All you need do is to set one receiver to the correct channel, press this button just once, and all the other receivers in the case will immediately be set to the same channel.





 **SENNHEISER**

Sennheiser electronic GmbH & Co. KG

Am Labor 1, 30900 Wedemark, Germany  
[www.sennheiser.com](http://www.sennheiser.com)